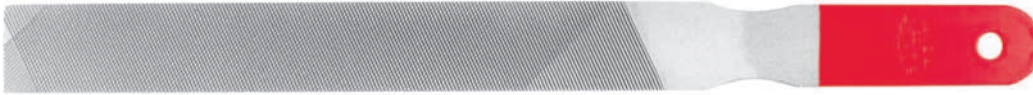
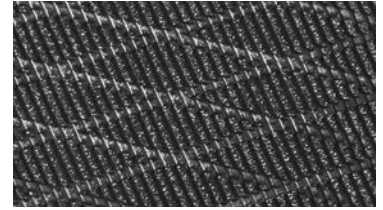


AMERICAN PATTERN FILES



Machinist Files, generally double-cut, are excellent for hogging (rapid stock removal) on all types of material.

Saw Files, generally single-cut, are great for smoother finishes and best suited for sharpening saws or dressing edged tools.



ALL PURPOSE

The built-in handle provides maximum versatility for a wide range of applications. All-Purpose Files feature a double cut on one side, a single cut on the other side, have one edge cut and one edge safe (uncut) for shoulder filing, and are parallel in width and thickness.

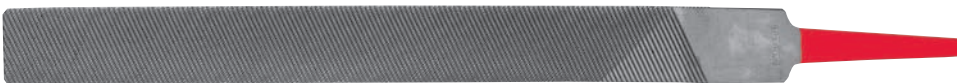
"/mm	Code #	Box Qty.
8 / 200	73187500	12
10 / 250	73188000	12



ALUMINUM FLAT

Aluminum Files have a coarse, fast cutting tooth design that is very effective in eliminating clogging. Developed for use on soft materials, such as aluminum, Aluminum Flat Files are double cut and taper toward the point in width.

"/mm	Code #	Box Qty.
6 / 150	73274500	12
8 / 200	73275000	12
10 / 250	73275500	12
12 / 300	73276000	6



ALUMINUM HALF ROUND

The half round shape with the fast cutting tooth design is great for rounding out holes, corners and crevices on soft materials.

"/mm	Code #	Box Qty.
6 / 150	73373000	12
10 / 250	73374000	12
12 / 300	73374500	6



CHAIN SAW ROUND

Used for sharpening and maintaining proper tooth shape on chain saws. Round Chain Saw Files have a fast, smooth cutting action that leaves an excellent "keen" edge cutting finish.

"/mm	Code #	Box Qty.
1/8" x 6"	73740110	12
5/32" x 6"	73740210	12
3/16" x 8"	73740310	12
7/32" x 8"	73740610	12
1/4" x 8"	73740910	12
3/8" x 8"	73741810	12